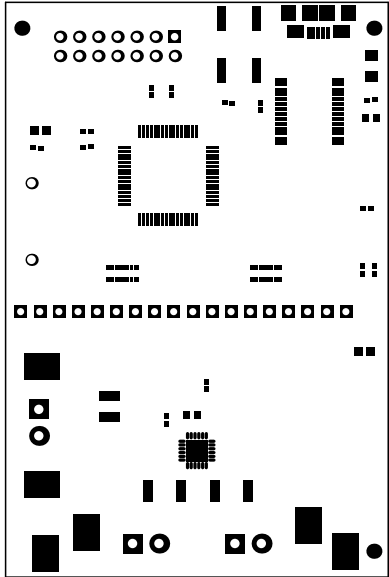
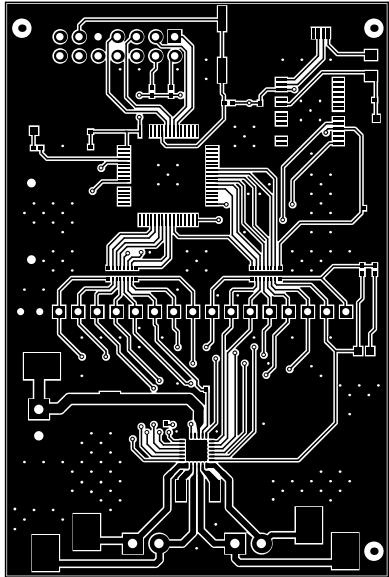


LBL1

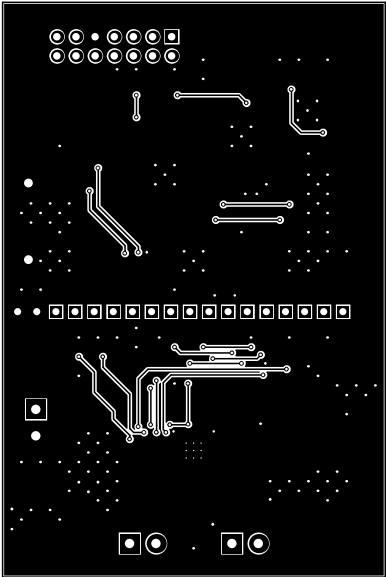
ALL ARTWORK VIEWED FROM TOP SIDE	BOARD #: DRU8846EVM	REV: Rev A	SUN REV: Not In VersionControl
LAYER NAME = Top Overlay			
PLOT NAME = Top Overlay	GENERATED : 5/13/2014 12:43:42 PM	TEXAS INSTRUMENTS	



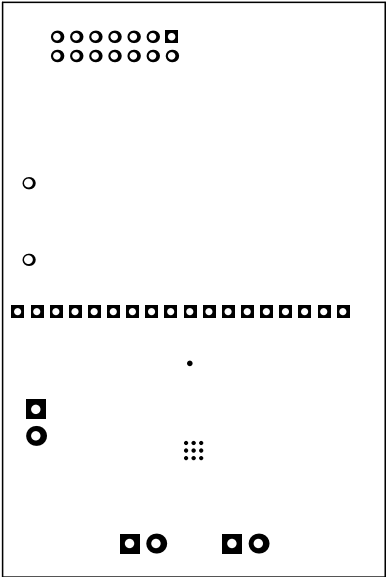
ALL ARTWORK VIEWED FROM TOP SIDE	BOARD #: DRV8846EVM	REV: Rev A	SUN REV: Not In VersionControl
LAYER NAME = Top Solder			
PLOT NAME = Top Solder Mask	GENERATED : 5/13/2014 12:43:43 PM	TEXAS INSTRUMENTS	



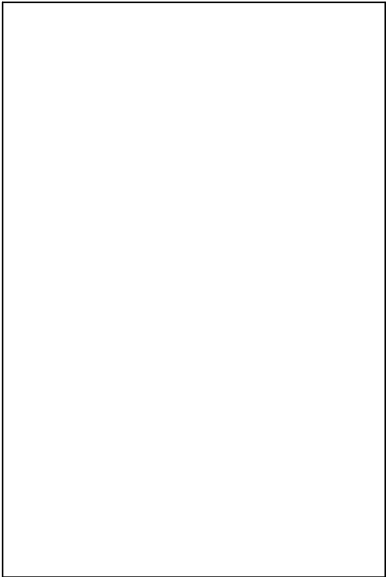
ALL ARTWORK VIEWED FROM TOP SIDE	BOARD #: DRV8846EVM	REV: Rev A	SUN REV: Not In VersionControl
LAYER NAME = Top Layer			
PLOT NAME = Top Layer	GENERATED : 5/13/2014 12:43:44 PM	TEXAS INSTRUMENTS	



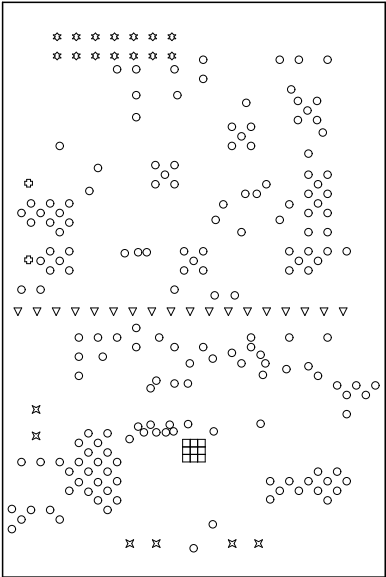
ALL ARTWORK VIEWED FROM TOP SIDE	BOARD #: DRV8846EVM	REV: Rev A	SUN REV: Not In VersionControl
LAYER NAME = Bottom Layer			
PLOT NAME = Bottom Layer	GENERATED : 5/13/2014 12:43:44 PM	TEXAS INSTRUMENTS	



ALL ARTWORK VIEWED FROM TOP SIDE	BOARD #: DRV8846EVM	REV: Rev A	SUN REV: Not In VersionControl
LAYER NAME = Bottom Solder			
PLOT NAME = Bottom Solder Mask	GENERATED : 5/13/2014 12:43:45 PM	TEXAS INSTRUMENTS	



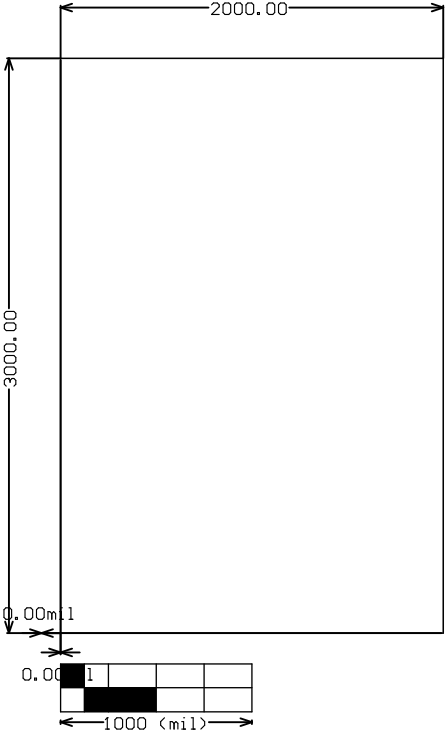
ALL ARTWORK VIEWED FROM TOP SIDE	BOARD #: DRV8846EVM	REV: Rev A	SUN REV: Not In VersionControl
LAYER NAME = Bottom Overlay			
PLOT NAME = Bottom Overlay	GENERATED : 5/13/2014 12:43:46 PM		TEXAS INSTRUMENTS



Symbol	Hit Count	Tool Size	Plated	Hole Type
□	9	7.874mil (0.2mm)	PTH	Round
○	179	15mil (0.381mm)	PTH	Round
▽	18	38mil (0.965mm)	PTH	Round
✱	14	40mil (1.016mm)	PTH	Round
⊗	2	47.244mil (1.2mm)	PTH	Round
⊠	6	50mil (1.27mm)	PTH	Round
228 Total				

Drill Table

ALL ARTWORK VIEWED FROM TOP SIDE	BOARD #: DRV8846EVM	REV: Rev A	SUN REV: Not In VersionControl
LAYER NAME = Drill Drawing			
PLOT NAME = Drill Drawing	GENERATED : 5/13/2014 12:43:46 PM	TEXAS INSTRUMENTS	



ALL ARTWORK VIEWED FROM TOP SIDE	BOARD #:	DRV8846EVM	REV:	Rev A	SUN REV:	Not In VersionControl
LAYER NAME = M2 Board Dimensions						
PLOT NAME = Board Dimensions	GENERATED	: 5/13/2014	12:43:47 PM	TEXAS INSTRUMENTS		